



IMPORTANT NOTICE REGARDING LANDFILL FEES, BULK PICKUP AND CURBSIDE PICKUP

- **USER FEES APPLY TO ALL WASTE BEING DELIVERED TO THE WASTE DISPOSAL SITE.**
- **FEES WILL BE COLLECTED AT THE WASTE DISPOSAL SITE.**
- **DEBIT AND CREDIT CARDS ARE THE ONLY ACCEPTABLE MEANS OF PAYMENT.**
- **2 FREE BAGS ARE ALLOWABLE AT THE WASTE DISPOSAL SITE.**
- **LIMIT OF 2 BAGS OR APPROVED CONTAINERS DURING CURBSIDE PICKUP.**
- **EXTRA BAG TAGS ARE AVAILABLE AT THE TOWN OFFICE FOR \$2.00 EACH.**
- **\$25.00 FEE FOR BULK PICKUP, PAYMENT MUST BE MADE AT THE TOWN HALL NO LATER THAN THE DAY BEFORE THE SCHEDULED BULK PICKUP DAY.**
- **NO LEAVES OR YARD WASTE WILL BE PICKED UP DURING CURBSIDE PICKUP OR BULK PICKUP. RESIDENTS ARE RESPONSIBLE FOR THEIR OWN YARD WASTE. CAN BE DISPOSED OF AT THE LANDFILL WASTE SITE FOR FREE.**



MUNICIPAL LANDFILL

HOURS OF OPERATION:

Winter Hours

November 1st to March 31st

Wednesday 9AM to 5PM

Thursday 9AM to 5PM

Friday 9AM to 5PM

Saturday 9AM to 5PM

Summer Hours:

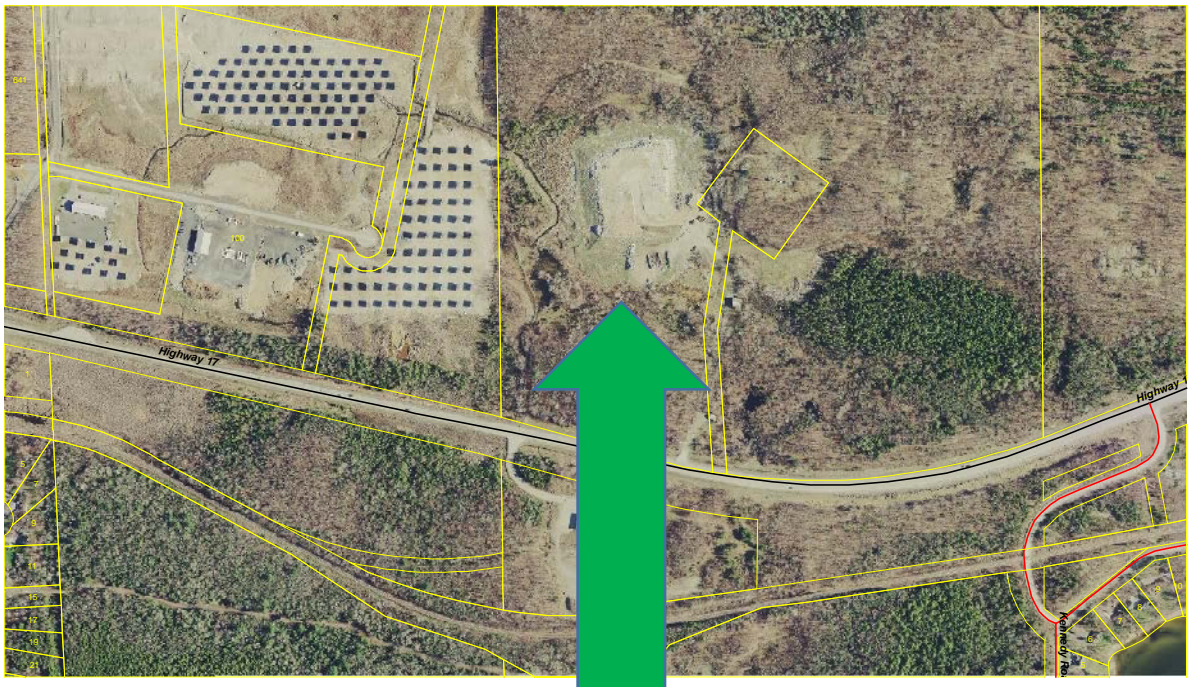
April 1st to October 31st

Wednesday 10AM to 6PM

Thursday 10AM to 6PM

Friday 10AM to 6PM

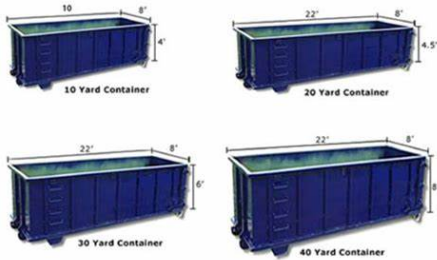
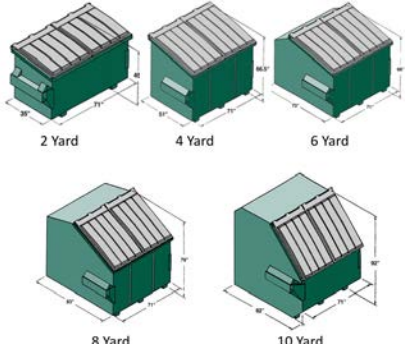
Saturday 9AM to 5PM



1182 Hwy. 17 East – being part of Lot 7, Concession I, geographic Township of Striker now in the Town of Blind River.



| Waste Management | Resident household non-Hazardous Waste |
|--|--|
| FEES WILL BE COLLECTED AT THE WASTE DISPOSAL SITE DEBIT AND CREDIT CARD TRANSACTIONS ONLY CASH NOT ACCEPTED | |
| 2 Garbage Bags or approved containers delivered to Landfill. | 2 Free |
| Tires , passenger size. | Free |
| Clean not painted wood, brush, leaves. | Free |
| Metal appliances , stove, dishwasher, washer, dryer. | Free |
| Fridges, Freezers, Air conditioners, water coolers, Freon removed and tagged by certified technician. | Free |
| Scrap metal | Free |
| E Waste , computers, monitors, cell phones, home theatre systems, printers, photo copiers, TV's, speakers, stereo equipment. | Free |
| Garbage Bag Tag required for more than 2 bags. | \$2.00 |
| Large Furniture : Couch, Chair, Mattress, Box Spring, | \$10.00/ item |
| Bulk Pickup Must be paid at town hall before pickup will be booked. Town Hall will advise GFL location approved for pickup. | \$25.00 |
| Calculations based on waste volume | \$10.00/ yard Length x width x height in feet divided by 27 = volume in yards |
| Mini Van/ SUV- half load | \$5.00 |
| Mini Van/ SUV- Full load | \$10.00 |
| 6' short box truck 1.5 yards | \$15.00 |
| 8' Long Box Truck 2.28 yards | \$22.80 |
| Tandem/ Double Axle Dump Truck or Equivalent. | \$10.00/yard |
| Tri-Axle or trailer Dump | \$10.00/yard |
| Common Utility Trailers: | |
| 6' x 5' x 1' high load = 1 yard | \$10.00 |
| 6' x 5' x 2' high load= 2 yard | \$20.00 |
| 8' x 5' x 1' high load= 1.5 yard | \$15.00 |
| 8' x 5' x 2' high load= 3 yard | \$30.00 |
| 8' x 5' x 3' high load= 4.5 yard | \$45.00 |
| 10' x 5' x 1' high load= 1.8 yard | \$18.00 |
| 10' x 5 x 2' high load= 3.6 yard | \$36.00 |
| 10' x 5 x 3' high load= 5.4 yard | \$54.00 |
| 12' x 6' x 1' high load= 2.6 yard | \$26.00 |
| 12' x 6' x 2' high load= 5.2 yard | \$52.00 |
| 12' x 6' x 3' high load= 7.8 yard | \$78.00 |
| 14' x 6' x 1' high load= 3 yard | \$30.00 |
| 14' x 6' x 2' high load= 6 yard | \$60.00 |
| 14' x 6' x 3' high load= 9 yard | \$90.00 |
| 16' x 6' x 1' high load= 3.5 yard | \$35.00 |
| 16' x 6' x 2' high load= 7 yard | \$70.00 |
| 16' x 6' x 3' high load= 10.5 yard | \$105.00 |
| 20' x 6' x 1' high load= 4.5 yard | \$45.00 |
| 20' x 6' x 2' high load= 9 yard | \$90.00 |
| 20' x 6' x 3' high load= 13.5 yard | \$135.00 |

| Dumpsters: | |
|---|---|
|  | <p>10 yd bin = \$100.00 20 yd bin = \$200.00 30 yd bin = \$300.00 40 yd bin = \$400.00</p> |
|  | <p>2-yard bin = \$20.00 4-yard bin = \$40.00 6-yard bin = \$60.00 8-yard bin = \$80.00 10-yard bin = \$100.00</p> |

NOTE: Acceptance of any of the above noted materials is at the complete discretion of the Corporation of the Town of Blind River. The Corporation reserves the right to grant or refuse to grant permission to dispose of any waste material at the Landfill Facility. Those wishing to deposit large quantities of waste at the Municipal Landfill Site must receive a written approval from the Municipality.



What Can I Recycle?



| YES These items can be placed in your recycling. | NO Do not place any of the following items in the blue box. |
|---|--|
| <u>Paper</u> Newspaper, glossy flyers, white, brown or colored writing & mailing papers, Photocopy paper, Envelopes remove the windows, phone books, Keep newspaper separate from cardboard, put shredded paper in clear bags. | <u>Paper</u> Carbon, tissue paper, gift wrap, bows, chip bags, candy wrappers, wax paper, hard book covers, paper towel/tissues. |
| <u>Boxboard and cardboard</u> Milk/Juice Cartons, tetra packs, Cereal, detergent, shoe boxes, paper roll tubes. cardboard egg cartons, pizza boxes (remove excess food). remove liners. Layered cardboard boxes with ripple between layers, place beside blue box flattened & bundled (30"x30"x8"). | <u>Boxboard and cardboard</u> waxed boxes, coffee cups, frozen juice containers, containers with metal bottom or trim (i.e. Pringles, coffee containers, ice tea mix containers). |
| <u>Metal</u> Metal & aluminum food & beverage cans, aluminum foil trays, aluminum food containers (pie plates, etc.). rinsed jar lids can be placed with metal food cans. | <u>Metal</u> Pots, pans, metal hangers, |
| <u>Plastic</u> Plastic bottles, jugs, containers and lids with the following numbers marked on them. ♻️ 1 through 6. | <u>Plastic</u> grocery/garbage/milk/bread bags, plastic toys, plastic film wrap (i.e. Wrap from water bottle cases), bubble wrap, garden hose, planting flats and pots, plastic cutlery. |
| <u>Glass</u> None | <u>Glass</u> All glass, ceramics or mirrors |
| <u>Styrofoam</u> None | <u>Styrofoam</u> Foam packing, cups, egg cartons, meat trays, packing peanuts. |
| <u>Other local recycling programs</u> <ul style="list-style-type: none"> ➤ Liquor, beer and wine containers can be returned to the Beer Store for a refund. ➤ St Joseph's School welcome ink cartridges, pens and markers. ➤ St Mary's School accept batteries ➤ Home Hardware accept Paint, stains, cans and aerosols ➤ The Source accepts ink cartridges, toner and batteries | |



Household Hazardous Waste






- shall not be accepted as the waste site.
- Household Hazardous Waste Day is scheduled every other year.
- There will be a Household Hazardous Waste Day scheduled in 2020.
- These items include: paints, chemicals, solvents, gas, oil, batteries, pesticides, oven cleaners, aerosols, gasoline, propane cylinders, pharmaceuticals, drain cleaners, flashlight batteries, flea powder, nail polish and remover, photographic chemicals, thermometers/thermostats, antifreeze, car batteries, brake fluid, gasoline, glues, motor oil, oil filters, turpentine, fertilizers, herbicides, insecticides, pesticides, pool chemicals, fluorescent light bulbs and driveway sealers.

Why were my Waste or Recyclables not collected?

The collection contractor may not pick up your waste and/or recyclable materials for the following reasons:

- Waste contains recyclable materials
- Recyclables are mixed with non-recyclables or waste
- Waste does not have a bag tag if more than 2 bags.
- Waste is more than 20 kg
- Waste and/or recyclables have been placed further than 1 metre from the curb
- Waste and/or recyclable container is blocked (ie. snow bank, parked vehicle)
- Waste and/or recyclables contain contaminated material
- Waste is not placed in a covered container or securely

DO NOT ACCEPT LIST

| HAZARDOUS MATERIALS | COMPRESSED GAS CYLINDERS | CORROSIVES | PCB'S |
|---|--|---|--|
| <p>Oil and Paints Anti-Freeze Cleaners Pool Chemicals Fertilizers and Pesticides</p> <div style="text-align: center;">  </div> | <p>Propane Tanks Aerosol Containers Fire Extinguishers Butane Gas</p> <div style="text-align: center;">  </div> | <p>Batteries</p> <div style="text-align: center;">  </div> | <p>Capacitors Mercury Switches Thermometers Ballasts Fluorescent Lights</p> <div style="text-align: center;">  </div> |
| REFRIGERANTS | EXPLOSIVES | BIOHAZARDOUS MATERIALS | RADIOACTIVE MATERIALS |
| <p>Cars Air Conditioner's Fridges Freezers</p> <div style="text-align: center;">  </div> | <p>Fire Arms Ammunition Shells</p> <div style="text-align: center;">  </div> | <p>Needles Syringes Pharmaceuticals</p> <div style="text-align: center;">  </div> | <p></p> <div style="text-align: center;">  </div> |

Please Contact the Town of Blind River for information regarding Household Hazardous Waste Collection Day. (705) 356-2251



Bulk Pick Up

The following items will not be picked up during bulk items, clean-up waste days:

- Waste from demolished buildings & building renovations i.e. drywall, asphalt roofing shingles, bricks, cement blocks, ceramic tiles, concrete, plate glass (unless broken and boxed), patio doors, wood, skids or railway ties.
- Hazardous waste
- Paint, chemicals, solvents, gas, oil, drums of any kind and home heating tanks.
- Fridge/freezers that are not decommissioned by a licensed technician.
- Car bodies, auto parts, engine blocks, batteries of any kind, tire etc.
- Brush/branches over 3" in diameter or not bundled and tied in 3' lengths and easily handled.
- Large trees and tree stumps.
- Dirt, sand or rocks.
- Carpets/underlay unless rolled and tied for easy handling.
- Fencing/wood fencing.
- E-waste/computers/TV's/Electronics
- Leaves and grass clippings

**Note: A fee of \$25.00 for any Bulk pickup will apply.
Arrangements for Bulk Pickup can be made at the Town
office 11 Hudson Street Blind River. 705-356-2251**